

Water Extra!

ALPINE, CALIFORNIA, U.S.A.

MONDAY SEPTEMBER 26, 1960

Vote Yes on Water Tomorrow!

You Can Vote IF--

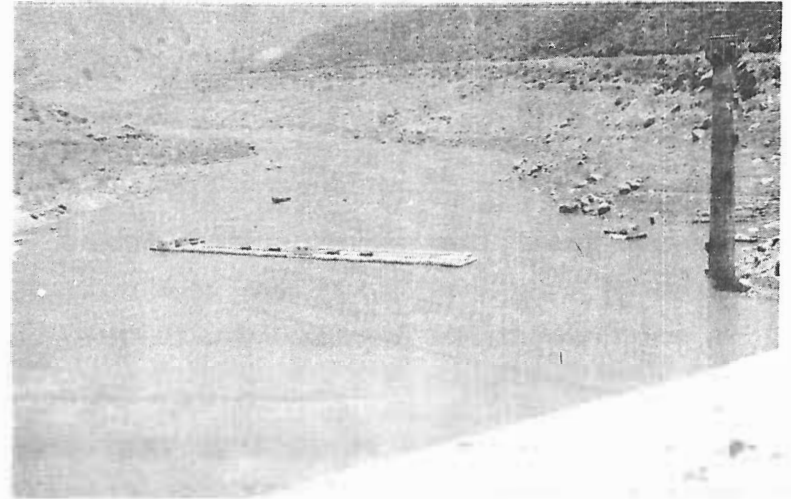
Eligibility to vote in Tuesday's annexation election is yours if you are a registered voter within the district. This was established by the county regis-

THAT WILL INSURE AMPLE ALLOTMENT FOR ALPINE

By Cecil Lewinson

CHAIRMAN, ANNEXATION COMMITTEE

Tuesday, September 27 is to be a red letter day in the history of our beautiful



DISTRESSING LACK OF WATER IS SHOWN BY THIS AIR VIEW OF EL CAPITAN DAM BELOW ALPINE.

triar of voters, who mailed out sample ballots.

However, if you have moved out of the district, to some other section of Alpine not in the water

area, you cannot vote, although a sample ballot

mountain community.

For voters within the now unified Alpine Heights Municipal Water District will go to the polls and cast their ballots on annexing our district to Rio San Diego Municipal District.

By that move Alpine will then become a part of the

MORE ON PAGE 8

MORE ON PAGE 7

Increase the value of your land with WATER!



EDITORIAL

What Happens When Alpine Gets Water?

Now that this community is on the verge of having plenty of water there are many things that will happen here shortly after.

First, Alpine will have a branch bank, as has been talked of by several large banking interests who sent survey men here to confer with the Sun regarding population, business, future prospects and so on.

Then will come FHA and bank loans for all types of buildings; homes, business, apartments and so on.

Population will gradually increase till there will be demand enough for many new lines of work as hospital, dentist, roofing firm, builders, more stores and so forth.

At some future date Alpine might decide to incorporate, which would bring many benefits, lowered taxes, better public services and all that.

Zoning and street improvement, tree planting and water-sheds, and drains, extended

sewer lines, more schools and many other advantages including cultural ones that will benefit the entire population. Yes, with the arrival of water, will come many wonderful benefits, plus a few disadvantages, but then, that is the law of progress.—CI

REPRINTED FROM
THE ALPINE SUN
AUGUST 5, 1960



Transportation Free

For Voters Minus Cars

If you have no car, or have no means of getting to the polls to vote to bring water to Alpine Tuesday. you have no worry at all, says the committee. Just phone HI5-2665 or 2539 and a car will be provided with no obligation, to take you to and from the polls.

WATER WILL SAVE MONEY!

Insurance experts say that when Alpine gets water, with fire hydrants, the high back country fire rates will be materially reduced, a permanent savings to taxpayers.

**SMOKEY SAYS
ONLY YOU
CAN PREVENT
FOREST FIRES!**

Alpine Officials for Water

THE ALPINE HEIGHTS MUNICIPAL WATER DISTRICT

September 19, 1960

TO WHOM IT MAY CONCERN:

As previously stated, the Policy of the Board of Directors of the ALPINE HEIGHTS MUNICIPAL WATER DISTRICT has been to bring water to Alpine as quickly as possible for the least possible expense. This Board feels that this Policy can best be carried out through the annexation of the District to RIO SAN DIEGO MUNICIPAL WATER DISTRICT, THE SAN DIEGO COUNTY WATER AUTHORITY and THE METROPOLITAN WATER DISTRICT OF CALIFORNIA by voting YES on September 27th.

THE ALPINE HEIGHTS MUNICIPAL WATER DISTRICT

Alexander L. Adams

Floyd P. Lowe

J. C. LaForce

Frank M. Wilson

Fred C. Rohr

BOARD OF DIRECTORS

FOR WATER VOTE YES!

TUES. SEPT. 27, 1960

For ANNEXATION To

Rio San Diego Municipal Water District, San Diego County Water Authority
and the Metropolitan Water District of L.A.

A LARGE VOTE IN FAVOR OF THIS PROPOSITION WILL
SAVE MONEY FOR EVERY TAXPAYER BECAUSE IT WILL
HELP TO REDUCE THE INTEREST RATE ON FUTURE BONDS.



WHAT WILL THIS COST YOU?

THE AVERAGE HOME (\$2,000 ASSESSED VALUATION) WILL
PAY \$14.20 A YEAR FOR THE FIRST FIVE YEARS \$8.20
A YEAR FOR THE SECOND FIVE YEARS AND \$5.20 A YEAR
FOR THE LAST 20 YEARS

If You Need Transportation, Phone H15-2665 or H15-2539

Alpine Can Afford this Plan-- Delays Will Increase the Cost.

THIS ADVERTISEMENT WRITTEN AND PAID FOR BY THE ALPINE ANNEXATION COMMITTEE

Dr. Julius L. Collins, Mrs. Anne Hume, Clarke Irvine, Dallas D. Lore, Edgar S. Welty, Cecil Lewinson, Chairman.

Cost of Annexation

	Total	Annual Amt.	No. of years
1. Metro	\$289,890.	\$ 9,663.	30
2. Co. W. A.	57,100	5,710	10
3. Rio	56,926	11,385	5
4. TOTAL	\$403,916	\$26,758	
5. Present Assessed Valuation	\$ 3,772,071		
6. Original Tax Rate =	$\frac{26,758}{37,720} = 0.71$ for 1st 5 years		
7. At end of first five years Rio is fully paid			
8. Metro & Co. W. A. Tax Rate =	0.41 for 2nd 5 years		
9. At end of ten years Co. W. A. is fully paid			
10. Metro Tax Rate =	0.26 for 20 years		

Metro then paid in full.

11. These tax figures were derived by using the present assessed valuation of the area to be annexed to Rio. As the valuation of the area increases during the future years the annual tax rate will decrease accordingly.

➡ The 71¢ will be on the 1961-62 tax bill.

Vote Yes on Water Tomorrow

FROM PAGE 1

San Diego Water Authority and the great Metropolitan Water District of LA. With that we will be entitled to our allotment of precious Colorado River Water. This is the first step in actually bringing water into this community. And if this is not voted in tomorrow, Alpine may never get an ample supply of water.

As everyone knows, Alpine asked Rio for annexing, for that was found to be the cheapest way of getting water here as Rio has the set-up, pipelines, and so forth, to deliver it here.

Our committee, appointed by C.C. Price, president of the Rio board, has been working hard ever since the hearing and acceptance of our request for annexing, to explain all details of conditions, costs and so on, to the voters of Alpine.

Bringing water here is not going to be prohibitive, not too costly. Of course it will cost a little more in taxes, but when we consider the incessant, and growing need for deepening wells in this land where the water table is continually receding, outside water will stop this once and for all, and Alpine can then blossom out with water for all purposes. (See reprint on next page). Every community that has

grown and prospered with the coming of water, such as Poway, El Cajon, La Mesa, Fletcher Hills, Ramona, and others, has recognized the fact that the Metropolitan, SD Water Authority, Rio and others, have had to pay back taxes, costs and interest to bring water in.

They all have paid it, and have suffered no appreciable rise in taxes and their monthly costs have been less than digging, deepening, maintaining wells and paying for power to pump water.

Bringing water in is a success. It is a success measure for every area, and is acknowledged as such, and no property-owner would care to go back to the old dry days.

Water in Alpine will bring lower rates because with improvement and building, the tax base will broaden, which means lower rates.

Perhaps the easiest way to look at this annexation vote is that it will cost only 71¢ per \$100. of assessed valuation for next year's (1961-62) fiscal tax bill, but if it is delayed, it will cost still more. See tax figures on page 6.

California, specially the Southland, and SD County in particular, is in dire need

MORE ON NEXT PAGE

<p style="text-align: center;">Be Sure To VOTE Tuesday</p>	<p style="text-align: center;">Rural or P O Boxholder Alpine, Calif</p>
---	---

VOTE YES ON WATER FROM PAGE 7

of water In a few years Colorado water, with its legal handicaps, will not be enough to go around That is why it is imperative that we also pass the California Water Plan which will be voted on this Nov 8, to bring us future supplies of Feather River Water Let's not let California and our country dry up!

This committee wishes to thank all who have worked on the project from its first inception, down through the days of the proposed East County MWD, and who are working along with us today to bring water to Alpine Their fine cooperation is greatly appreciated.

There are people here, and more to come, who are ready to spend money in developing the area in large and small ways Besides, many homeowners will improve their properties when loans are made available by the presence of water After the election, it will come in a short time; it has done so in every other

Free Baby-Sitters for Women Going to Polls

Do not let your family-- if you have youngsters under school age-- hinder you from casting your ballot for bringing water to Alpine Tuesday, the committee invites Just call HI5-2665 or 2539 and a reliable adult will help you while you go to vote



YOU CAN VOTE IF-- FROM PAGE 1

may have been mailed to you. Thus you may be challenged by an official at the booth if you go to vote So be sure you are eligible to cast your ballot

district that voted for it, and today they are enjoying the benefits in many ways

The Alpine committee, whose names appear on the advertisement on pages 4 and 5, urges every voter to mark his ballot 'yes' for annexation tomorrow

Increase the value of your land with WATER!